

**KAJI**  
**COMPRESSOR**

# Lubricated Compressor

Water Cooled, Lubricated Type / Air Cooled, Lubricated Type

**KAJI**  
**COMPRESSOR**



YQ3-45L  
(TH-08-5075)  
Power required:37kW  
Discharge pressure:4.61MPaG

# Lubricated Compressor



**KAJI TECHNOLOGY CORPORATION**

### CONTRIBUTING TO THE WORLD AND LOOKING INTO THE FUTURE WITH THE LATEST TECHNOLOGY



- This series feature high efficiency products based on experiences in design and manufacture of all sorts of compressor and the most advanced engineering.
- KAJI is authorized by METI (Ministry of Economy, Trade and Industry) for testing and manufacturing of High Pressure Gas Producing Equipment, which scope is as follows:  
Authorization No. :MAB-133
- Fabricated by the governmentally certified workshop of our company, officially entitled to test and fabricate high-pressure gas handling installations for advanced and diversified technological needs. Our company has facilities to take up complete works, including design, fabrication, installation, maintenance, and after service, for complete lines that consist compressors, auxiliaries, and all other related equipment.
- Complying with governmental requirements as per "High Pressure Gas Control Law" (HPGCL), our compressors withstand the tests, such as :
  - Completion test (HPGCL Art.20)
  - Safety test (HPGCL Art.35)
  - Regular voluntary test for safety (HPGCL Art.35, Par.2)

#### 高圧ガス設備 試験・製造認定事業所

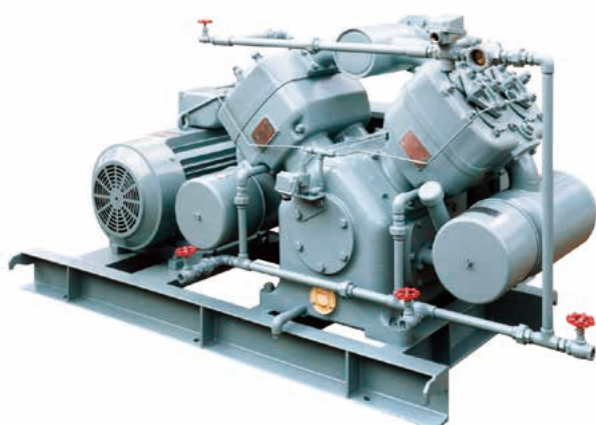
経済産業大臣認定番号

MAB 133

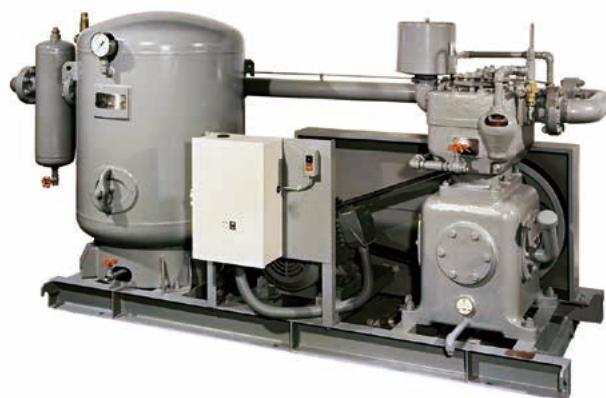
認定 熱交換器・往復動式圧縮機・管類・弁類  
機器 その他の附属機器類・複合機器

#### Extent of Governmental Certifications

Certification Number	Equipment Classification	Name of Equipment	Design Temperature (°C)	Design Pressure (MPa)	Power (kW)
MAB 133-B	Heat exchanger	Multi-tube type, Coil type and Double-tube type	-10 to 350	Less than 5.9	—
MAB 133-F	Reciprocating compressor	—	-10 to 350	Less than 54 Less than 5.9	Less than 380 Less than 470
MAB 133-M	Pipings	Machine mounted pipings	-10 to 350	Less than 54	—
MAB 133-N	Valves	Safety valves	-10 to 350	Less than 3.0	—
		Other valves Check valves Air operated valves		Less than 54	
MAB 133-Z	Integrated Equipment	Compressor unit	-10 to 350	Less than 54 Less than 5.9	Less than 380 Less than 470



YQ-45D



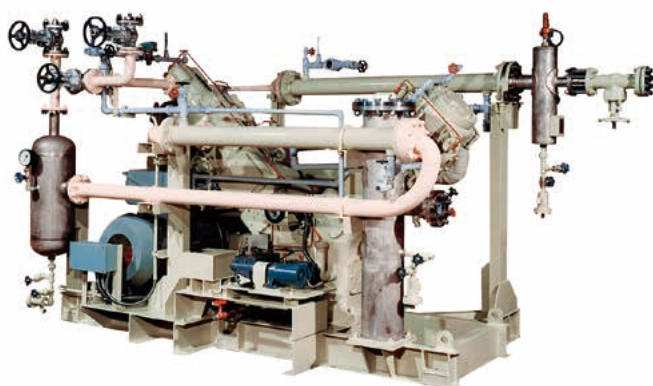
VD-22D

## Water Cooled, Lubricated Type

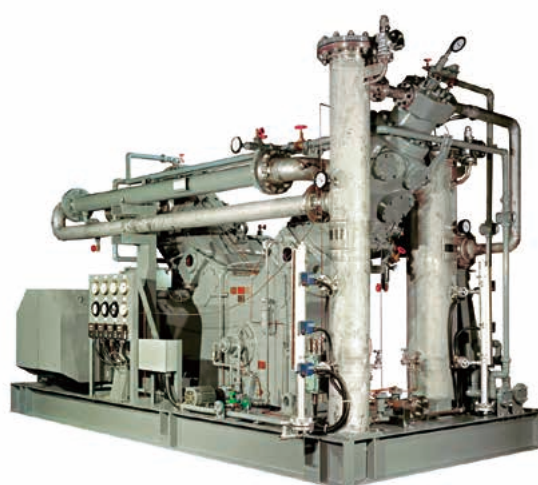
### 2.94MPaG SERIES

Remarks: Specifications herein are subject to change without prior notice

Power required (kW)	7.5	11	15	18.5	22	37	45	75	90	110	125	132	150	165	190
Model	VD2-11C		VD2-22D			YQ2-45D		YD3-75L		YD3-110		YD3-140L		YD3-180L	
1st cyl. bore(mm)×No.	120×1		165×1			165×2		250×1		300×1		350×1		400×1	
2nd cyl. bore(mm)×No.	45×1		65×1			65×2		200×1		200×1		250×1		300×1	
3rd cyl. bore(mm)×No.	—		—			—		100×1		100×1		130×1		165×1	
Stroke (mm)	100		140			140		180		180		180		180	
Rotational speed (min <sup>-1</sup> )	640	900	490	590	720	620	740	510	580	520	580	480	550	480	560
Piston displ. (m³/min)	0.72	1.02	1.47	1.77	2.22	3.74	4.46	8.90	10.1	13.0	14.5	16.4	18.7	21.5	25.08
Cooling water (ℓ/min)	10		15			20		30		90		100		130	
Poles of motor	4P		6P		6P	4P	6P	4P	6P		6P		6P		6P
Press. reg. method	By suction opening unloaders with pressure switch and solenoid valve.														
Weight of compr. (kg)	280		500			800		3000		4000		4500		5000	
Standard accessories	Suction filter, oil gauge, water flow indicator, drainage valve for cooling water, companion flange, suction opening unloaders, inter cooler & separator (with safety valve, pressure gauge and drain valve), forced lubrication device (with gear pump, oil pressure gauge and oil pressure switch) for above 75kW, cylinder lubricator for above 75kW, disassembling tools, spare parts (valve plates, valve springs, o-rings for chest cover - each 1/2 sets), anchor bolts and nuts.														
Optional accessories	Induction motor, motor pulley & V-belts, pressure switch, solenoid valve, common base, cooling water relay, after cooler & separator with safety valve, pressure gauge and drain valve, starter panel, control panel, wiring, piping, receiver and others.														



YD3-75L



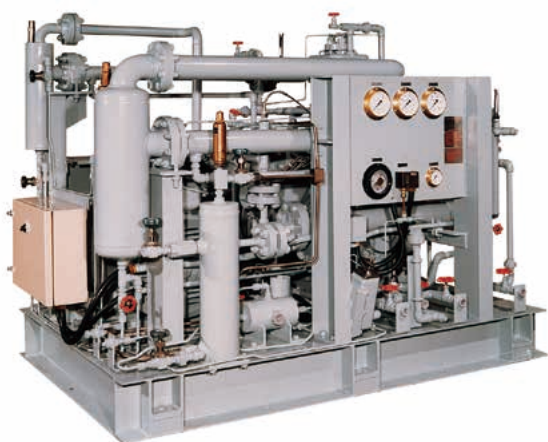
YD3-140L



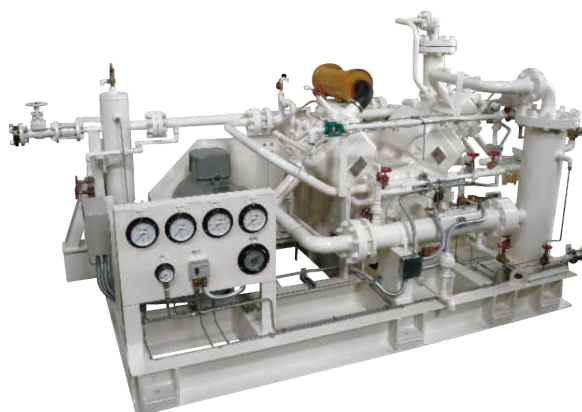
### 4.90MPaG SERIES

Remarks: Specifications herein are subject to change without prior notice

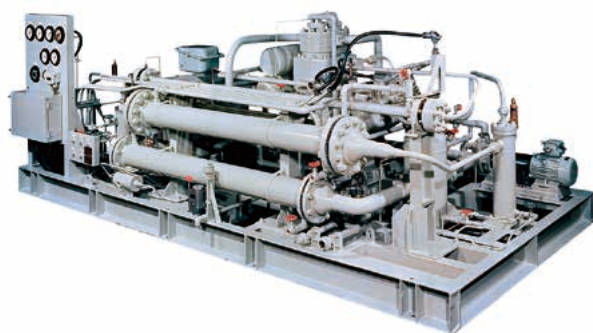
Power required (kW)	30	37	45	55	75	90	110	125	132	132	150	165
Model	WT3-30	YQ3-45L		WH3-75	YD3-75		YD3-110			YD3-140		
1st cyl. bore(mm)×No.	165×1	165×2		165×2	250×1		300×1			350×1		
2nd cyl. bore(mm)×No.	80×1	100×1		80×2	165×1		200×1			200×1		
3rd cyl. bore(mm)×No.	35×1	50×1		35×2	80×1		100×1			100×1		
Stroke (mm)	140	140		140	180		180			180		
Rotational speed (min <sup>-1</sup> )	890	560	680	890	450	540	440	500	540	430	480	540
Piston displ. (m <sup>3</sup> /min)	2.46	3.35	4.07	5.33	7.85	9.42	11.0	12.5	13.5	14.7	16.4	18.4
Cooling water (ℓ/min)	40	50	60	70	90	110	130	150	160	170	180	200
Poles of motor	4P	6P		4P	6P		6P			6P		
Press. reg. method	By suction opening unloaders with pressure switch and solenoid valve.											
Weight of compr. (kg)	700	1200		1600	3000		4500			5000		
Standard accessories	Suction filter, oil gauge, water flow indicator, drainage valve for cooling water, companion flange, suction opening unloaders, inter cooler & separator (with safety valve, pressure gauge and drain valve), forced lubrication device (with gear pump, oil pressure gauge and oil pressure switch) for above 75kW, cylinder lubricator for above 75kW, disassembling tools, spare parts (valve plates, valve springs, o-rings for chest cover - each 1/2 sets), anchor bolts and nuts.											
Optional accessories	Induction motor, motor pulley & V-belts, pressure switch, solenoid valve, common base, cooling water relay, after cooler & separator with safety valve, pressure gauge and drain valve, starter panel, control panel, wiring, piping, receiver and others.											



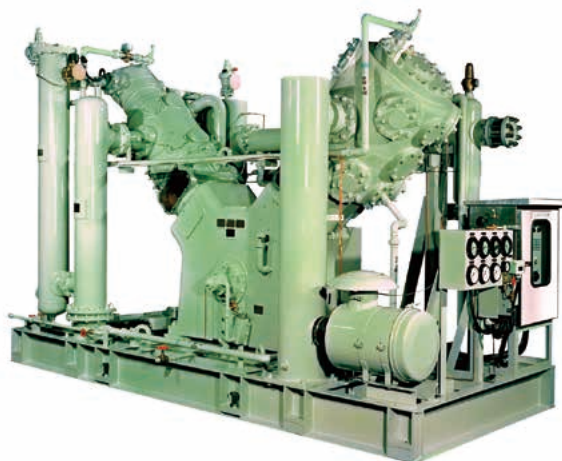
WT3-30



YQ3-45L



WH3-75

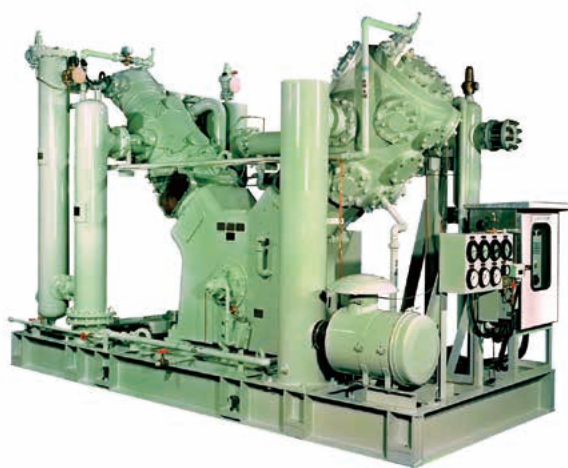


YD3-110

## 9.8~14.7MPaG SERIES

Remarks: Specifications herein are subject to change without prior notice

Disch. press (MPaG)	9.80							14.7				
Power required (kW)	30	37	75	90	110	125	132	22	30	37	45	60
Model	YD3-45		YD3-75		YD3-110			WT3-30		YQ3-45		WH3-75
1st cyl. bore(mm)×No.	165×1		250×1		300×1			165×1		165×2		165×2
2nd cyl. bore(mm)×No.	100×1		165×1		200×1			80×1		80×1		80×2
3rd cyl. bore(mm)×No.	50×1		80×1		100×1			35×1		35×1		35×2
Stroke (mm)	140		180		180			140		140		140
Rotational speed (min <sup>-1</sup> )	420	540	400	480	390	440	480	550	750	560	700	770
Piston displ. (m³/min)	2.47	3.18	6.98	8.37	9.73	11.00	12.00	1.65	2.24	3.35	4.19	4.60
Cooling water (ℓ/min)	40	50	90	110	130	150	160	30	40	50	60	70
Poles of motor	6P		6P		6P			6P		6P		6P
Press. reg. method	By suction opening unloaders with pressure switch and solenoid valve.											
Weight of compr. (kg)	1600		3000		4500			700		1200		1600
Standard accessories	Suction filter, oil gauge, water flow indicator, drainage valve for cooling water, companion flange, suction opening unloaders, inter cooler & separator (with safety valve, pressure gauge and drain valve), forced lubrication device (with gear pump, oil pressure gauge and oil pressure switch) but excepting Model WT3-30 & YQ3-45, cylinder lubricator for 9.8MPa{100kgf/cm²} series, disassembling tools, spare parts (valve plates, valve springs, o-rings for chest cover - each 1/2 sets) anchor bolts and nuts.											
Optional accessories	Induction motor, motor pulley & V-belts, pressure switch, solenoid valve, common base, cooling water relay, after cooler & separator with safety valve, pressure gauge and drain valve, starter panel, control panel, wiring, piping, receiver and others.											

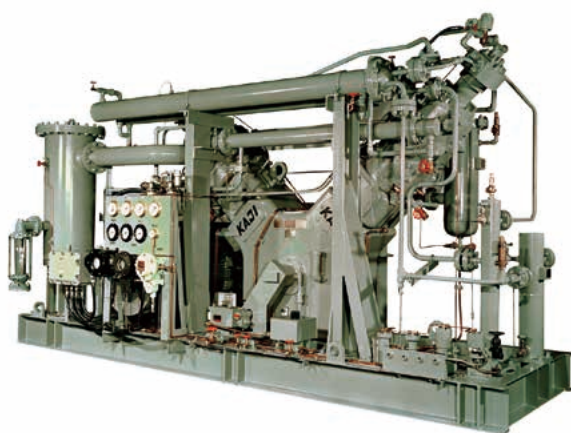


YD3-110

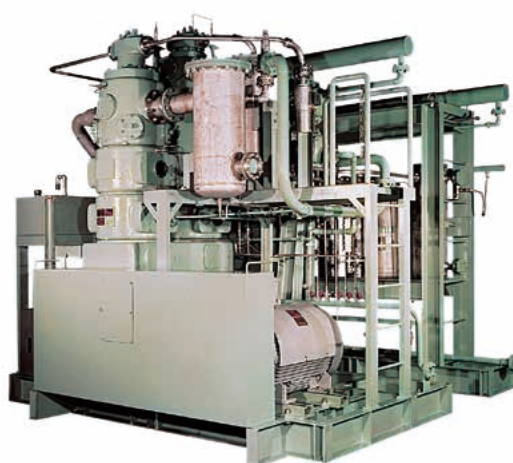
### 24.5~34.3MPaG SERIES

Remarks: Specifications herein are subject to change without prior notice

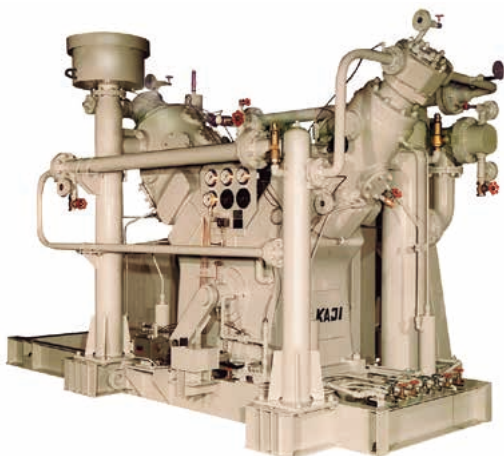
Disch. press (MPaG)	34.30			24.50			34.30	24.50	29.40
Power required (kW)	30	37	45	55	90	110	110	150	90
Model	YQ4-45			VD4-45	YD4-75	YD4-110	YD4-110	YD4-140	YD5-90
1st cyl. bore(mm)×No.	165×1			165×1	300×1	300×1	320×1	400×1	300×1
2nd cyl. bore(mm)×No.	80×1			90×1	130×1	165×1	150×1	200×1	165×1
3rd cyl. bore(mm)×No.	35×1			45×1	70×1	65×1	70×1	100×1	80×1
4th cyl. bore(mm)×No.	19×1			22×1	35×1	35×1	35×1	50×1	50×1
5th cyl. bore(mm)×No.	—			—	—	—	—	—	50-40
Stroke (mm)	140			160	180	180	180	180	180
Rotational speed (min <sup>-1</sup> )	620	720	840	450	480	480	480	500	420
Piston displ. (m <sup>3</sup> /min)	1.86	2.13	2.52	1.49	6.0	6.0	6.8	11.0	5.03
Cooling water (ℓ/min)	40	50	60	60	110	110	110	160	110
Poles of motor	6P		4P	6P	6P	6P	6P	6P	6P
Press. reg. method	By suction opening unloaders with pressure switch and solenoid valve.								
Weight of compr. (kg)	1200			2500	3500	4000	4800	5800	5000
Standard accessories	Suction filter, oil gauge, water flow indicator, drainage valve for cooling water, companion flange, suction opening unloaders, inter cooler & separator (with safety valve, pressure gauge and drain valve), forced lubrication device (with gear pump, oil pressure gauge and oil pressure switch), cylinder lubricator but excepting Model YO-45, disassembling tools, spare parts (valve plates, valve springs, o-rings for chest cover - each 1/2 sets) anchor bolts and nuts.								
Optional accessories	Induction motor, motor pulley & V-belts, pressure switch, solenoid valve, common base, cooling water relay, after cooler & separator with safety valve, pressure gauge and drain valve, starter panel, control panel, wiring, piping, receiver and others.								



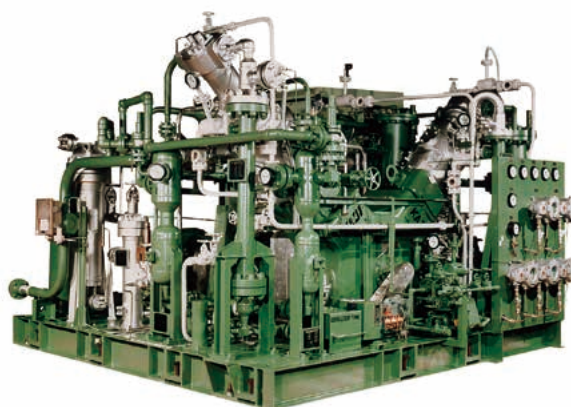
YD4-75



VD4-110



YD4-140



YD5-90



## Booster Series

● For booster use, specifications vary depending on gas handled, suction temperature, suction pressure, discharge pressure, gas quantity and other requirement. Please refer to us with specific requirements.

● Under-mentioned table is an example of our specification.

Remarks: Specifications herein are subject to change without prior notice

Disch. press (MPaG)	7.35	16.66		21.56	17.64	34.30	8.82
Suct. press (MPaG)	0.59~0.69	0.39~0.69				0.78	7.10
Power required (kW)	37	11	22	30	55	110	37
Model	VS2-45H	VD2-19H	VD2-22H	YQ3-45H	YD2-110H	VD3-30H	VS-45H
1st cyl. bore(mm)×No.	130×1	65×1	80×1	80×2	130×2	100×1	80×1
2nd cyl. bore(mm)×No.	65×1	28×1	35×1	50×1	50×2	50×1	—
3rd cyl. bore(mm)×No.	—	—	—	35×1	—	28×1	—
Stroke (mm)	160	140	140	140	180	140	160
Rotational speed (min <sup>-1</sup> )	490	360	720	670	530	500	450
Piston displ. (m <sup>3</sup> /min)	0.94	0.167	0.334	0.471	0.75	2.16	0.45
Poles of motor	6P	6P	4P	6P	6P	6P	6P

### Standard accessories

Suction snubber, inter cooler & separator (with safety valve, pressure gauge, and drain valve), V-belts, motor pulley, common base, disassembling tools, spare parts (valve plates, valve springs, o-rings for chest cover - each 1/2 sets), anchor bolts and nuts.

### Optional accessories

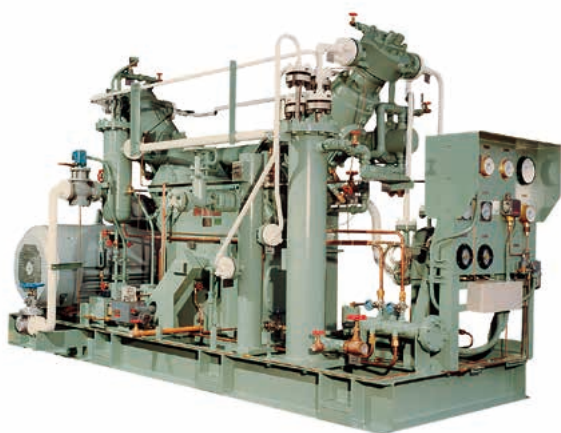
Induction motor, pressure switch for suction pressure and discharge pressure, after cooler & separator (with safety valve, pressure gauge and drain valve), starter, panel, control panel, receiver, various controlling and recording equipment and others.



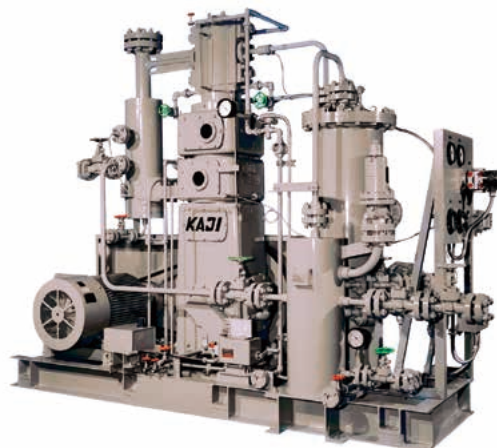
VS2-45H



VD2-22H



YD2-110H



VS-45H

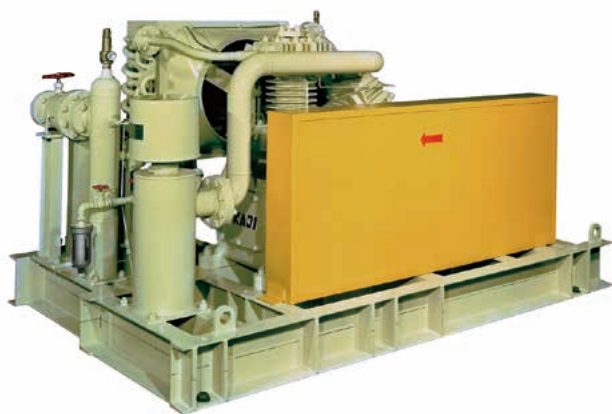
# Air Cooled, Lubricated Type Lubricated Compressor

Accumulated  
Technologies

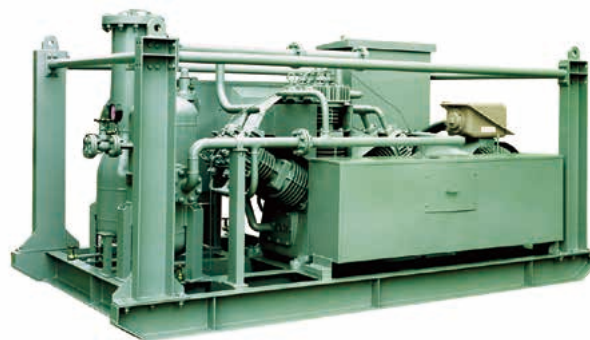
Air-Cooled  
Lubricated Compressor

Many High  
References

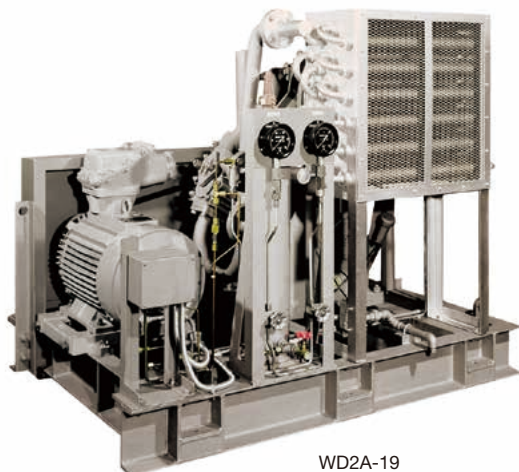
- This series feature high efficiency products based on experiences in design and manufacture of all sorts of compressor and the most advanced engineering.
- KAJI is authorized by METI (Ministry of Economy, Trade and Industry) for testing and manufacturing of High Pressure Gas Producing Equipment, which scope is as follows: Authorization No. :MAB-133
- **High reliability...**Through all processes in material selection, machining, welding, assembling, test and inspection, strict quality controls are carried out, which assure of safe operation with greater efficiency.
- **Good economy...**The advanced design concepts make operation and maintenance easy and economical and provide with outstanding durability.
- **Compact and minimum weight...**KAJI compressors are designed as not only compact but also minimal weight.
- **The consideration for user's convenience...**KAJI compressors range from large to small capacities for user's free choice.



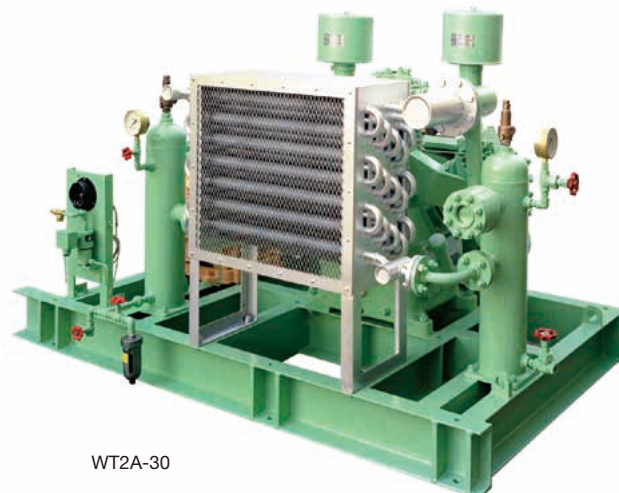
WD2A-19LL



WH2A-75



WD2A-19



WT2A-30



## Air Cooled, Lubricated Type

### 2.94MPaG SERIES

Remarks: Specifications herein are subject to change without prior notice

Disch. press (MPaG)	2.94							
Power required (kW)	7.5	11	15	18.5	22	30	37	45
Model	YD2A-11	WT2A-15	WD2A-19	WT2A-30	YQ2A-45			
1st cyl. bore(mm)×No.	120×1	120×2	165×1	165×2	165×2			
2nd cyl. bore(mm)×No.	50×1	65×1	65×1	80×1	65×2			
Stroke (mm)	90	90	140	140	140			
Rotational speed (min <sup>-1</sup> )	790	1160	850	720	450	610	720	850
Piston displ. (m <sup>3</sup> /min)	0.81	1.18	1.73	2.19	2.69	3.67	4.33	5.08
Press. reg. method	By suction opening unloaders with pressure switch and solenoid valve.							
Poles of motor	4P	4P	4P	6P	4P			
Weight of compr. (kg)	700	800	1000	1500	1800			

#### Standard accessories

Suction filter, each stage cooler, each stage separator with safety valve and pressure gauge, auto drainage valve, check valve, motor pulley & V-belts or coupling, common base, disassembling tools, spare parts (valve plates, valve springs, o-rings for chest cover-each 1/2 sets), anchor bolts and nuts.

#### Optional accessories

Induction motor, pressure switch, solenoid valve, starter panel, receiver, engine driving device, portable equipment, various controlling and recording equipment and others.

### 3.23MPaG SERIES

Remarks: Specifications herein are subject to change without prior notice

Disch. press (MPaG)	3.23															
Power required (kW)	0.75	0.75	1.5	1.5	2.2	3.7	5.5	11	22							
Model	YD2A-0.75S	VS2A-1.5B		YD2A-1.5H	YD2A-2.2C	WT2A-3.7C	WD2A-5.5D	WT2A-11D	WH2A-22B							
1st cyl. bore(mm)×No.	65×1	55×1		65×1	55×2	55×3	100×1	100×2	100×4							
2nd cyl. bore(mm)×No.	28×1	(55-48)×1		28×1	(55-48)×2	(55-48)×3	50×1	50×1	50×2							
Stroke (mm)	32	32		32	32	32	60	60	60							
Rotational speed (min <sup>-1</sup> )	700	675	950	1150	1420	1720	1200	1420	1720	950	1150	950	1150	950	1150	
Piston displ. (m <sup>3</sup> /min)	0.074	0.071	0.072	0.088	0.108	0.131	0.127	0.216	0.262	0.324	0.393	0.450	0.545	0.90	1.09	1.80
Press. reg. method	note 1		note 2		note 1		note 2									
Driving system (Poles of motor)	Coupling (8P)	Coupling (10P)	Coupling (6P)	Coupling (4P)	V-belts (4P)	Coupling (4P)	Coupling (4P)	Coupling (6P)	Coupling (6P)	Coupling (6P)	Coupling (6P)	Coupling (6P)	Coupling (6P)	Coupling (6P)	Coupling (6P)	
Weight of compr. (kg)	90	100		90	120	200	500	550	850							

note 1 Automatic start and stop by pressure switch, solenoid valve and auto-drainage valve.

note 2 Automatic start and stop by pressure switch, governor unloader and auto-drainage valve.

#### Standard accessories

Suction filter, governor unloader but excepting Model YD2A-0.75 and YD2A-1.5H, inter cooler & separator with safety valve, after cooler & separator, check valve, auto-drainage valve, motor pulley & V-belts or coupling, common base, spare parts (valve plates, valve springs, o-rings for chest cover-each 1/2 sets), anchor bolts and nuts.

#### Optional accessories

Induction motor, pressure switch, solenoid valve, pressure gauge for inter stage, safety valve and pressure gauge for after stage, starter panel, receiver, control panel and others.

### 4.90MPaG SERIES

Remarks: Specifications herein are subject to change without prior notice

Disch. press (MPaG)	4.90									
Power required (kW)	7.5		11	15	15		18.5	22	37	45
Model	WT3A-7.5		WT3A-15L		WQ3A-15L		WH3A-22B		YQ3A-45L	
1st cyl. bore(mm)×No.	100×1		120×1		100×2		100×3		165×2	
2nd cyl. bore(mm)×No.	50×1		65×1		80×1		50×2		100×1	
3rd cyl. bore(mm)×No.	28×1		35×1		42×1		28×1		50×1	
Stroke (mm)	60		90		60		60		140	
Rotational speed (min <sup>-1</sup> )	950	1150	600	900	950	1150	950	1150	600	700
Piston displ. (m³/min)	0.45	0.54	0.61	0.92	0.90	1.08	1.34	1.63	3.60	4.20
Press. reg. method	Automatic start and stop by pressure switch, solenoid valve and auto-drainage valve.									
Driving system (Poles of motor)	Coupling(6P)		V-belts(4P)		Coupling(6P)		Coupling(6P)		V-belts(6P)	
Weight of compr. (kg)	700		800		900		1000		2500	

#### Standard accessories

Suction filter, each stage cooler, each stage separator with safety valve and pressure gauge, auto drainage valve, check valve, motor pulley & V-belts or coupling, common base, disassembling tools, spare parts (valve plates, valve springs, o-rings for chest cover-each 1/2 sets), anchor bolts and nuts.

#### Optional accessories

Induction motor, pressure switch, solenoid valve, starter panel, receiver, engine driving device, portable equipment, various controlling and recording equipment and others.

# Air Cooled, Lubricated Type

## Lubricated Compressor

### 9.8~24.5MPaG SERIES

Remarks: Specifications herein are subject to change without prior notice

Disch. press (MPaG)	9.8~14.7								19.6~24.5			
Power required (kW)	7.5	11	15		22		37	45	7.5		15	
Model	WT3A-11		WP3A-15		WH3A-22B		YQ3A-45		WQ4A-11		WP4A-15	
1st cyl. bore(mm)×No.	100×1		100×2		100×3		165×2		100×1		100×2	
2nd cyl. bore(mm)×No.	50×1		50×2		50×2		80×1		50×1		50×1	
3rd cyl. bore(mm)×No.	19×1		28×1		28×1		35×1		28×1		28×1	
4th cyl. bore(mm)×No.	—		—		—		—		16×1		16×1	
Stroke (mm)	60		60		60		140		60		60	
Rotational speed (min <sup>-1</sup> )	950	1150	950	1150	950	1150	470	570	950	1150	950	1150
Piston displ. (m <sup>3</sup> /min)	0.45	0.54	0.90	1.09	1.34	1.63	2.80	3.42	0.45	0.54	0.90	1.09
Press. reg. method	Automatic start and stop by pressure switch, solenoid valve and auto-drainage valve.											
Driving system (Poles of motor)	Coupling(6P)		Coupling(6P)		Coupling(6P)		V-belts(6P)		Coupling(6P)		Coupling(6P)	
Weight of compr. (kg)	700		750		1000		2500		750		900	

#### Standard accessories

Suction filter, each stage cooler, each stage separator with safety valve and pressure gauge, auto drainage valve, check valve, motor pulley & V-belts or coupling, common base, disassembling tools, spare parts (valve plates, valve springs, o-rings for chest cover-each 1/2 sets), anchor bolts and nuts.

#### Optional accessories

Induction motor, pressure switch, solenoid valve, starter panel, receiver, engine driving device, portable equipment, various controlling and recording equipment, and others.

### 29.4~68.6MPaG SERIES

Remarks: Specifications herein are subject to change without prior notice

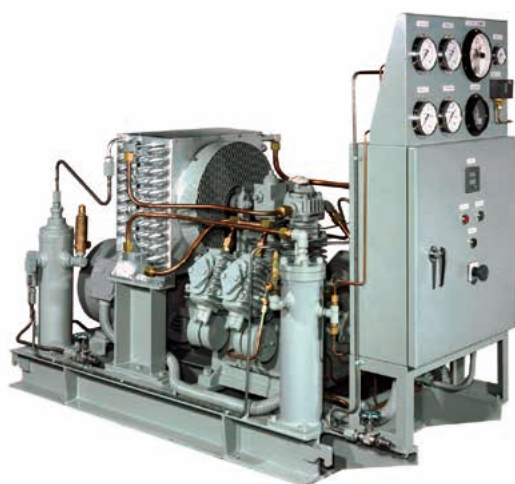
Disch. press (MPaG)	34.3				49			29.4			39.2		49	68.6	
Power required (kW)	22	30	37	45	30	37	45	60	75	90	15	18.5	70	90	55
Model	WH4A-22		YQ4A-45		YQ4A-45H			WH4A-90			WH5A-15		WH5A-90		WH5A-55
1st cyl. bore(mm)×No.	100×2		165×1		165×1			165×2			100×2		165×2		165×1
2nd cyl. bore(mm)×No.	50×2		80×1		80×1			80×2			80×1		100×1		80×1
3rd cyl. bore(mm)×No.	28×1		35×1		42×1			50×1			48×1		50×1		50×1
4th cyl. bore(mm)×No.	16×1		19×1		19×1			22×1			28×1		28×1		35×1
5th cyl. bore(mm)×No.	—		—		—			—			16×1		19×1		22×1
6th cyl. bore(mm)×No.	—		—		—			—			—		—		15×1
Stroke (mm)	60		140		140/100			140			60		140		140/100
Rotational speed (min <sup>-1</sup> )	950	1150	620	700	840	570	680	800	620	700	840	950	1150	700	840
Piston displ. (m³/min)	0.90	1.09	1.86	2.13	2.52	1.71	2.04	2.40	3.72	4.26	5.03	0.90	1.09	4.40	5.03
Press. reg. method	Automatic start and stop by pressure switch, solenoid valve and auto-drainage valve.														
Driving system (Poles of motor)	Coupling(6P)		V-belts(4P)		V-belts(4P)			V-belts(4P)			Coupling(6P)		V-belts(4P)		V-belts(4P)
Weight of compr. (kg)	1000		2500		2500			3500			1000		4000		4500

#### Standard accessories

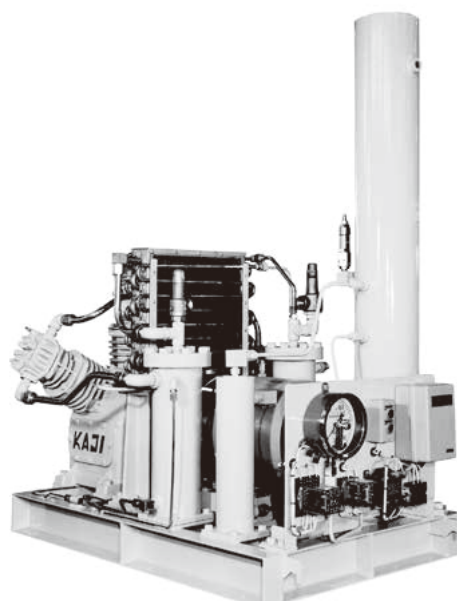
Suction filter, each stage cooler, each stage separator with safety valve and pressure gauge, auto drainage valve, check valve, motor pulley & V-belts or coupling, common base, disassembling tools, spare parts (valve plates, valve springs, o-rings for chest cover-each 1/2 sets), anchor bolts and nuts.

#### Optional accessories

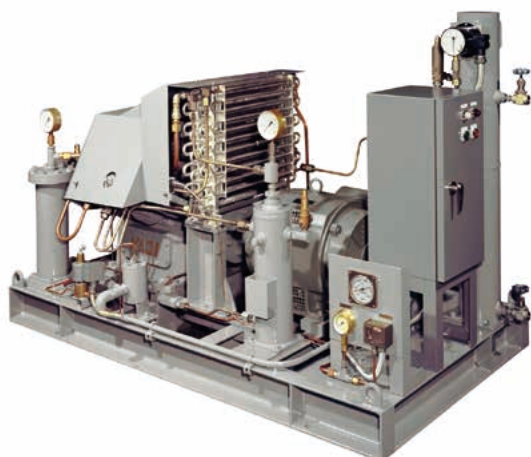
Induction motor, pressure switch, solenoid valve, starter panel, receiver, engine driving device, portable equipment, various controlling and recording equipment, and others.



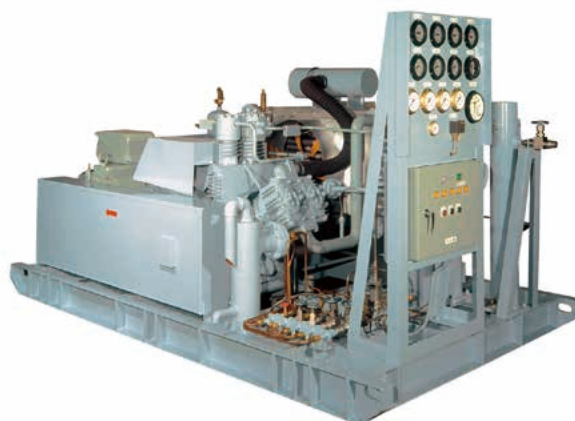
WH3A-22B



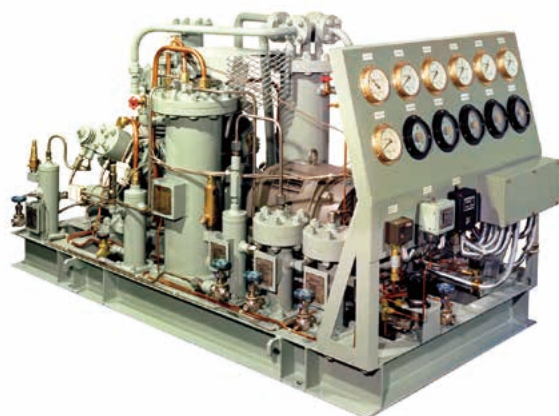
WT3A-11



WH4A-22



WH4A-90



WH5A-15



WH5A-90

### ■ Booster Series

- For booster use, specifications vary depending on gas handled, suction temperature, suction pressure, discharge pressure, gas quantity and other requirement. Please refer to us with specific requirements.

- Undermentioned table is an example of our specification.

Remarks: Specifications herein are subject to change without prior notice

Disch. press (MPaG)	0.88		5.83		19.6		
Suct. press (MPaG)	0.59~0.69						
Power required (kW)	15	30	11	22	15	30	45
Model	VDA-11H	VDA-22H	YD2A-11H	VD2A-22H	WT3A-15H	WT3A-30H	WT3A-45H
1st cyl. bore(mm)×No.	120×2	165×2	65×1	80×1	50×1	65×1	100×1
2nd cyl. bore(mm)×No.	—	—	35×1	42×1	28×1	35×1	50×1
3rd cyl. bore(mm)×No.	—	—	—	—	16×1	19×1	28×1
Stroke (mm)	100	140	90	140	90	140	140
Rotational speed (min <sup>-1</sup> )	500	450	800	800	950	800	500
Piston displ. (m <sup>3</sup> /min)	1.13	2.70	0.24	0.54	0.11	0.37	0.55
Driving system (Poles of motor)	V-belts(6P)	V-belts(6P)	V-belts(4P)	V-belts(4P)	Coupling(6P)	V-belts(4P)	V-belts(6P)
Weight of compr. (kg)	600	800	600	800	850	1000	1200

### Standard accessories

Suction snubber, inter cooler and separator with safety valve and pressure gauge, check valve, motor pulley & V-belts or coupling, common base, spare parts (valve plates, valve springs, o-rings for chest cover-each 1/2 sets), anchor bolts and nuts.

### Optional accessories

Induction motor, pressure switch, for suction pressure and discharge pressure, after cooler & separator with safety valve and pressure gauge, receiver, various controlling and recording equipment, and others.



## LINE OF PRODUCTS

- Compressors
  - Oil-Free Compressors (3.7~730kW)
  - Lubricating Compressors (0.4~600kW)
  - Special High Pressure Compressors (Max. 98 MPaG)
  - Oil-less H<sub>2</sub> Gas Compressors for H<sub>2</sub> station
- Gas collecting, refining and refilling equipment
- Heat exchangers
- Pressure Vessel



## KAJI TECHNOLOGY CORPORATION

### ☐ Head Office and Plant

6,Bodai, Mihara-ku, Sakai-city, Osaka 587-0064, Japan

TEL : (072) 361-0881

### ☐ Tokyo Branch

Sales Dept Sales Sec (Tokyo)

Technical Service Dept. Tokyo After-Sales Service Sec.

Hulic Kasai Rinkai 4F 3-6-4, Rinkai-cho, Edogawa-ku, Tokyo 134-0086 Japan

TEL : (03) 5679-6910

### ☐ Head Office

Sales Dept Sales Sec (Osaka)

Technical Service Dept. Osaka After-Sales Service Sec.

6,Bodai, Mihara-ku, Sakai-city, Osaka 587-0064, Japan

TEL : (072) 361-9500

**<https://www.kajitech.com>**